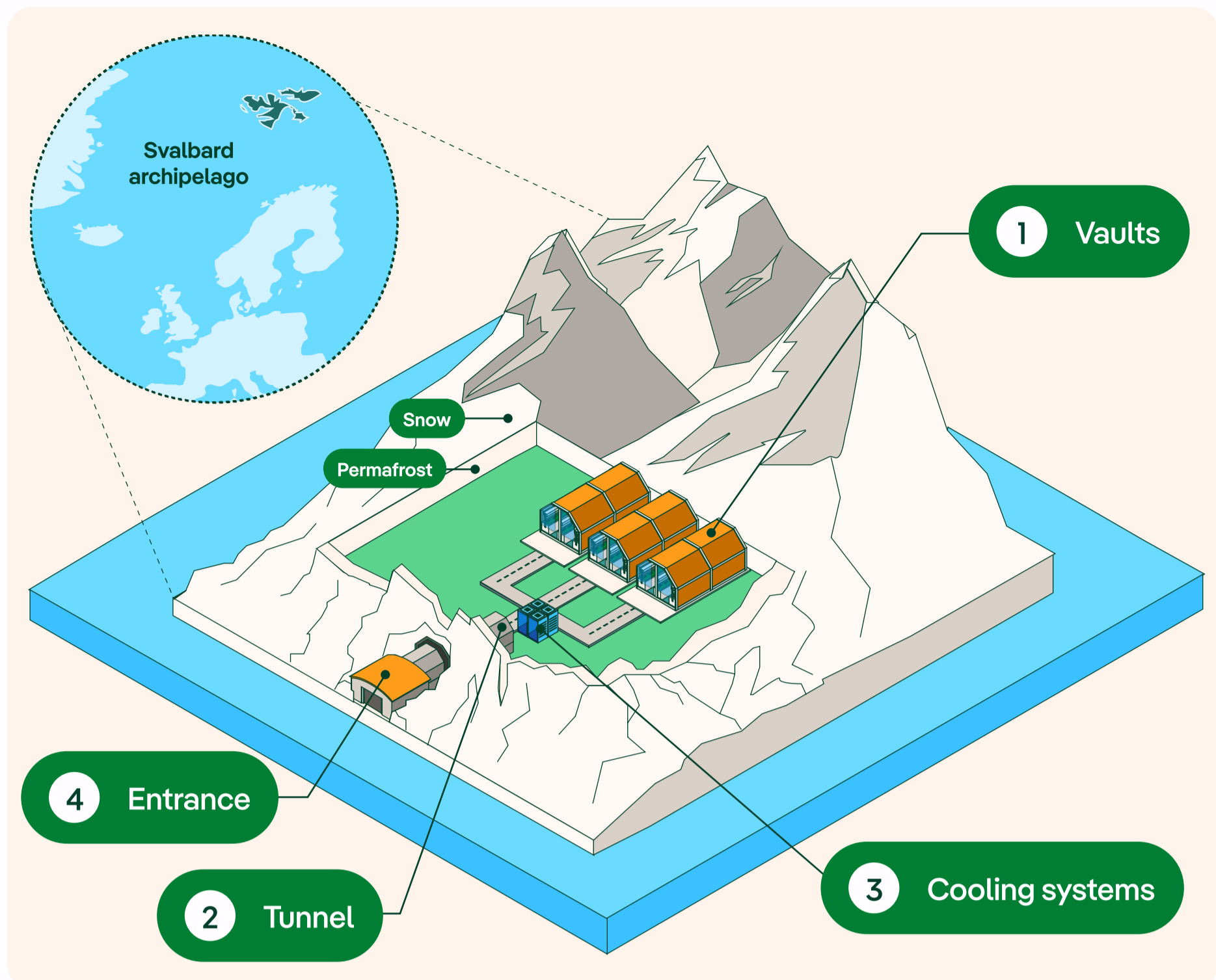


Svalbard, the world's largest seed bank



The complex is located **130 metres** below sea level

1 Vaults	2 Tunnel	3 Cooling systems	4 Entrance
They can hold up to 4.5 million different types of seeds.	It measures 130 m and its first half is reinforced with steel because the rock is unstable.	They maintain the temperature at -18°C.	Equipped with cameras and motion sensors to ensure security.

How are seeds stored?

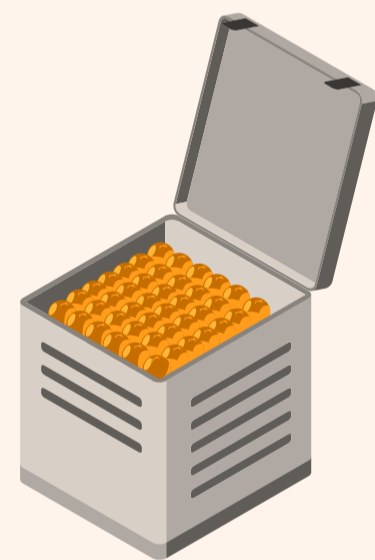
Seeds are placed in airtight boxes, inside envelopes that are resistant to moisture and punctures.



There are more than **6,000** different species

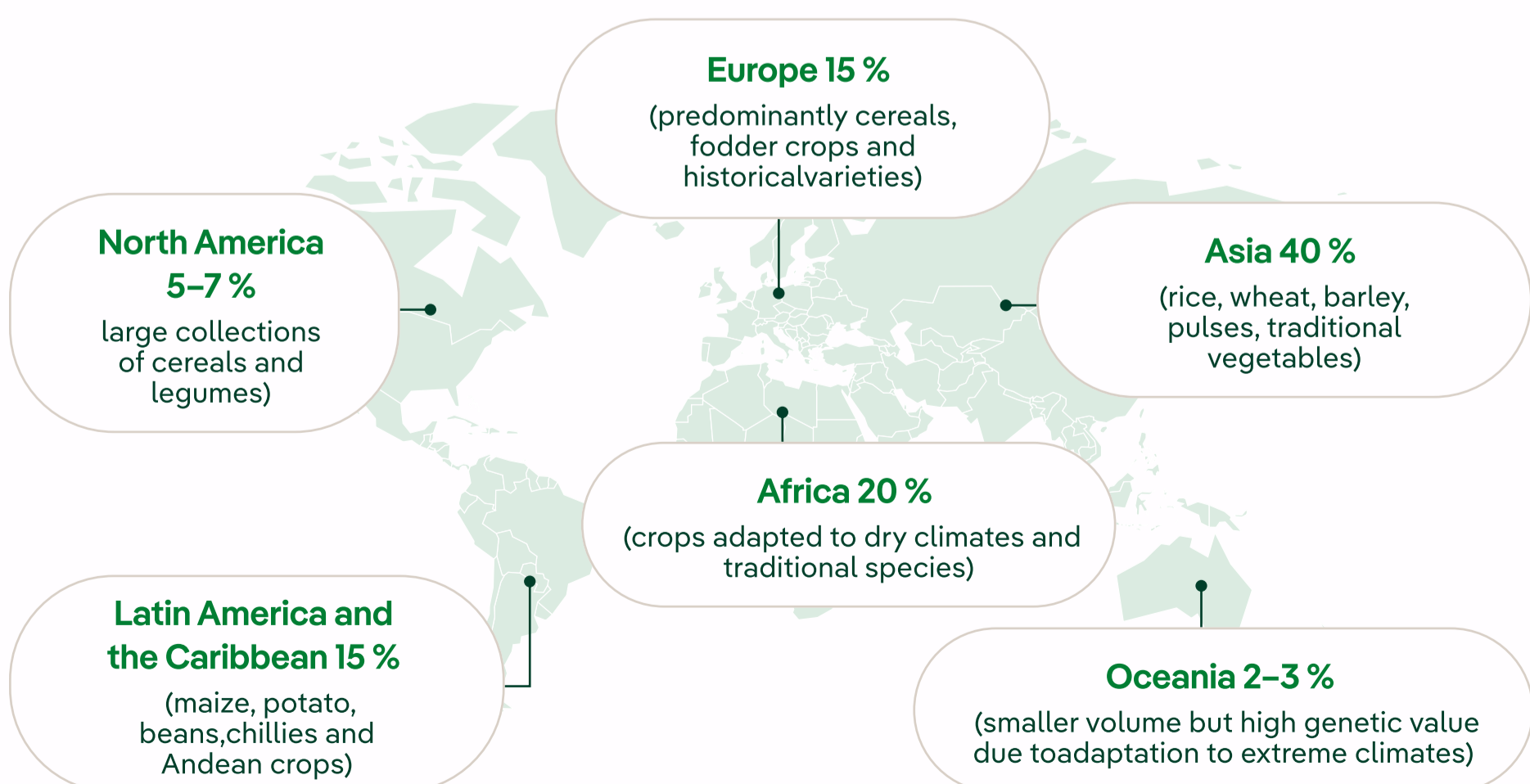


In total, there are **1,386,102** samples in the vault



Distribution by region

Out of a total of **1.35–1.38 million** samples in storage (figures for 2025–2026), the distribution is the following:



Sources: How It Works, Seedvault.no, CropTrust.org, report.croptrust.org, pressroom....crisat.org