

Construction of an offshore wind farm

Operation and maintenance building

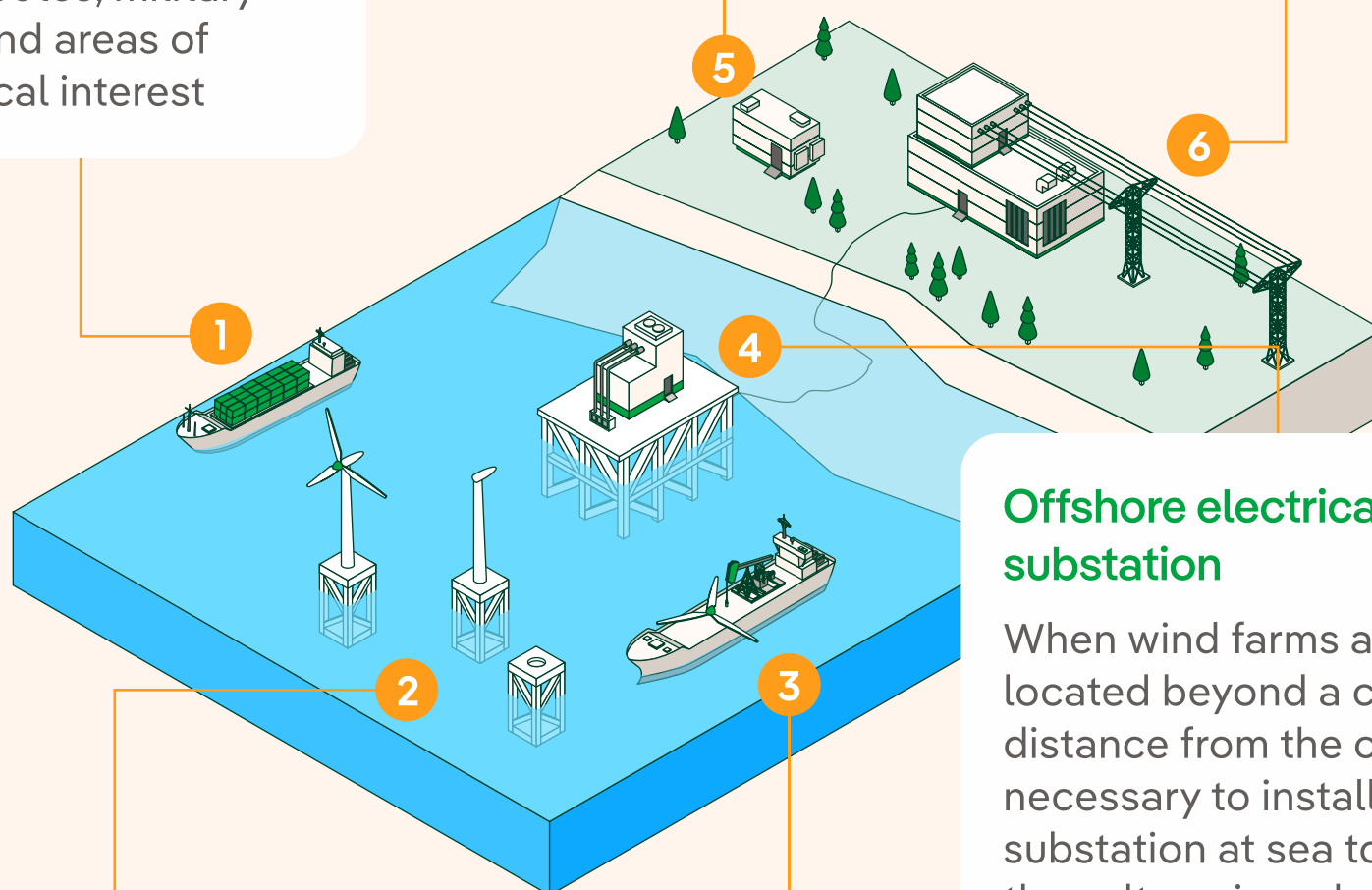
Located in a nearby industrial port, it serves the offshore wind farm throughout its life

Strategic location

The parks are located away from maritime traffic routes, military zones and areas of ecological interest

Onshore electrical substation

It transforms the electricity, transported via an undersea cable, to voltage levels suitable for transport on the terrestrial power grid



Offshore electrical substation

When wind farms are located beyond a certain distance from the coast, it is necessary to install a substation at sea to raise the voltage in order to avoid energy losses

Offshore wind farm

They are located in areas with a depth of up to 60 m—deeper if floating foundations are used—and can cover an area of up to 300 km²

Installation vessels

They transport the components of the wind turbines—as well as foundations and cables—pre-assembled wherever possible, and contain the cranes for offshore installation