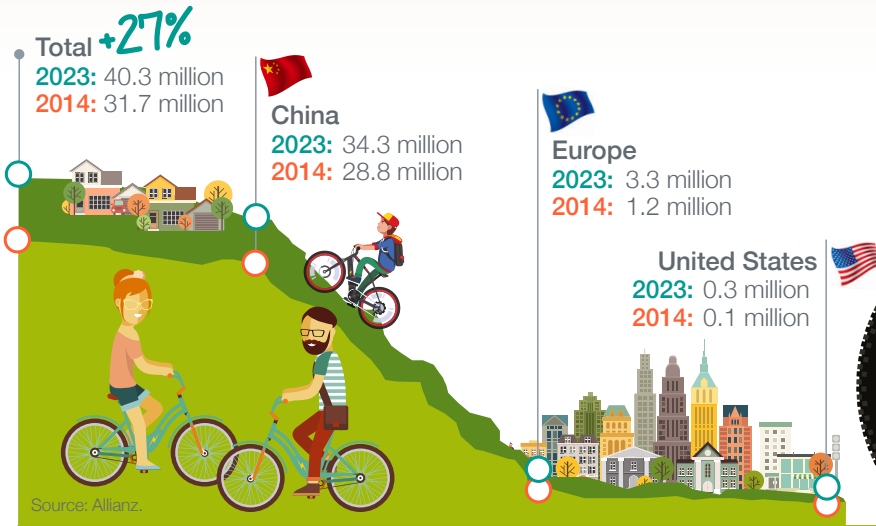


ELECTRIC BICYCLES, the means of transport of the future

SALE OF ELECTRIC BICYCLES AROUND THE WORLD:



TOP CITIES FOR ELECTRIC BICYCLES:



Source: Copenhagenize Index.

DEBUNKING SOME MYTHS:



They are not electric bicycles

Their official name is "pedelec" (from pedal electric cycle).



They are recharged by pedalling

This is only the case in some models. It is harder to pedal in the recharge mode.



It takes a lot of time to charge the battery

The battery is charged by 80% after half an hour, enough to use it.



They can be left charging

Only those with a built-in smart charging system.



They feature an accelerator

Only some models and the accelerator is only used during start-up. Those that can accelerate are classified as mopeds.



They are very heavy

Pedal-assisted systems makes them perfect for any age and physical condition.



They are much slower than a car

The average speed in large cities is very similar for both cars and bicycles: 15 to 25 km/h.



They are perfect for the summer

That's just an excuse! The north of Europe is where bicycles are used the most, in countries in which it is mostly rainy and windy.



You don't need to wear a helmet to use them

It is mandatory to wear a helmet if you are cycling on public roads or on bicycle lanes. And, in all other cases, it is also advised.