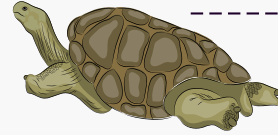


# Extinction risk categories for species

+

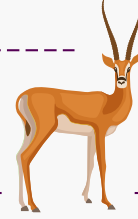
## EXTINCT (EX)

Species lost due to death of last surviving individual.



## EXTINCT IN THE WILD (EW)

Species that only survives in captivity.



## CRITICALLY ENDANGERED (CR)

Species with an extremely high risk of extinction in the wild.



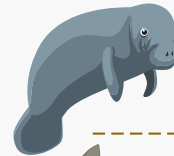
## ENDANGERED (EN)

Species with all live individuals in danger of extinction.



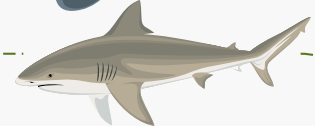
## VULNERABLE (VU)

Species threatened with a high probability of becoming endangered.



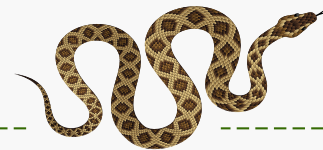
## NEAR THREATENED (NT)

Species not currently in danger of extinction, but which will or could be so in the near future.



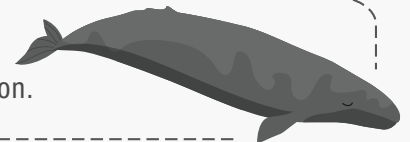
## LEAST CONCERN (LC)

Species not in danger of extinction in the near future.



## DATA DEFICIENT (DD)

Species lacking sufficient information to assess its risk of extinction.



## NOT EVALUATED (NE)

Species whose conservation status has yet to be determined.



EXTINCTION RISK

-

Source: IUCN (International Union for Conservation of Nature).