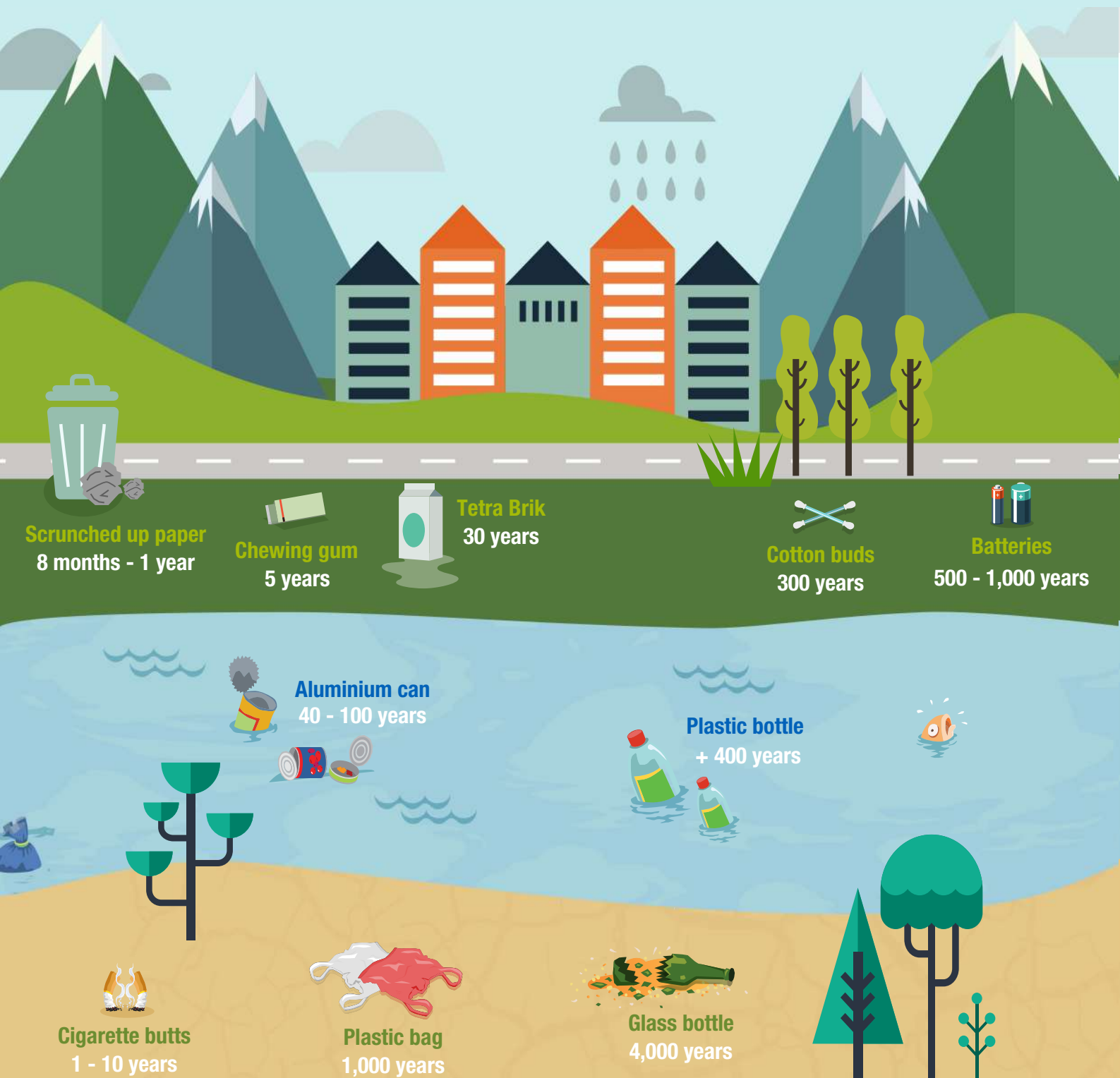


# HOW LONG DOES IT TAKE FOR WASTE TO BREAK DOWN?

It is estimated that by 2050, **3.4 billion tonnes of waste** will be produced in the world and, as a result, **2.6 billion tonnes of CO<sub>2</sub>** will be emitted.



Sources: 'What a Waste 2.0' report (World Bank, 2016) and Marine Conservation Society (MSC).