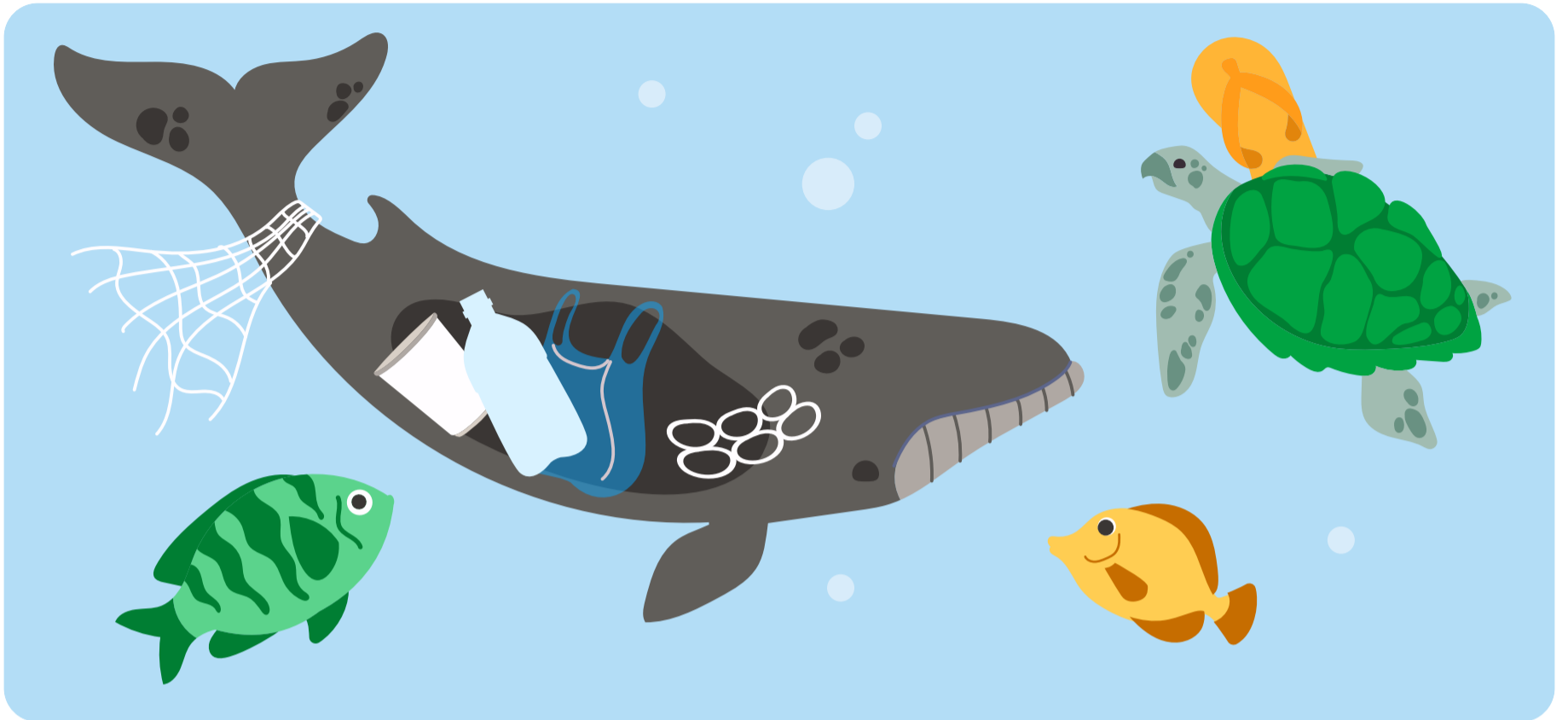


# How long does it take for single-use plastics to biodegrade?



Plastic bottle  
**500 years**

Toothbrush  
**500 years**

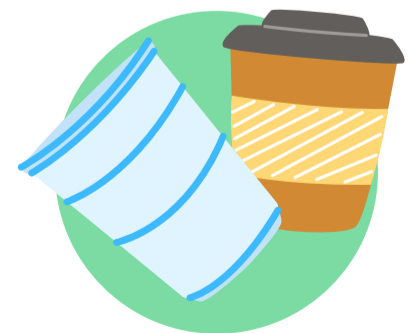
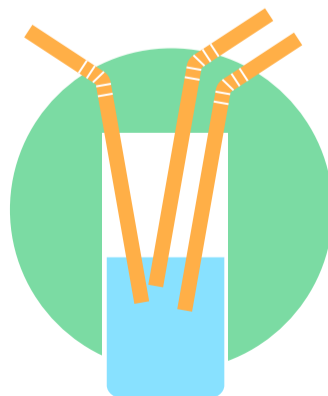
Plastic bag  
**400 years**



Plastic cutlery  
**400 years**

Drinking straw  
**200 years**

Plastic cup  
**100 years**



Source: Life Out Of Plastic (LOOP).