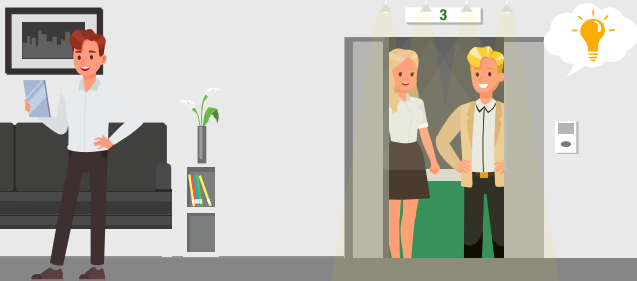


EVERY SECOND COUNTS IN YOUR ELEVATOR PITCH



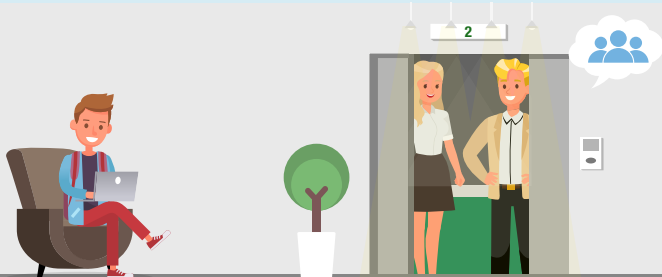
0-15 seconds

Introduce yourself and your idea in a few words. Try to create an impact in the first few seconds to capture your audience's attention.



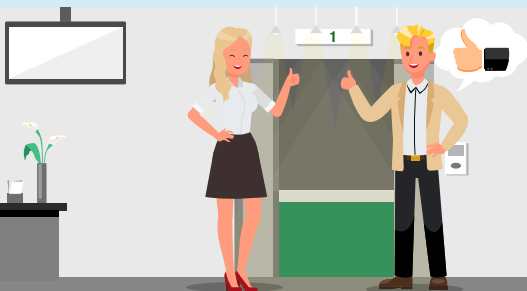
15-35 seconds

Expand on your idea with information on the problem it solves or the need it meets.



35-50 seconds

Specify what sets you apart from others and explain why your idea is guaranteed to succeed.



50-60 seconds

Repeat the strong point of your idea and leave the door open for another meeting, where you will provide more information.