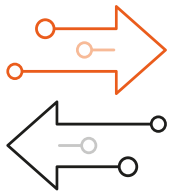


# WHAT DO INTRAPRENEURS CONTRIBUTE?



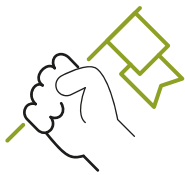
## Flexibility

They are comfortable with uncertainty and face up to changes optimistically.



## Motivation

Their presence creates a different atmosphere and stimulates the other workers.



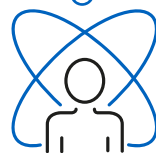
## Leadership

They have a talent for leading teams and making decisions.



## Efficiency

They adapt their working methods to meet the new demands from the market.



## Innovation

Their work is oriented towards developing new business models.

Source: IEBS, Innovation and Entrepreneurship Business School.