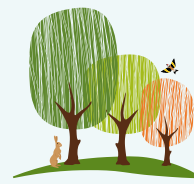




Trees PROGRAMME



Promote the planting of **20 million trees by 2030**



PURPOSE



To capture ~ **6 million t of CO₂** in 30 years*, equivalent to those emitted by **6,000,000 diesel cars** per 5,800 km



TIMELINE

2022



2,5 million

2025



8 million

2030



20 million

TO OCCUPY AN AREA EQUIVALENT TO **



3,125 football fields



10,000 football fields

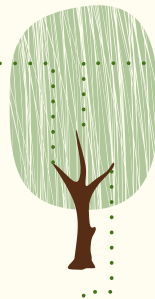


25,000 football fields



BRANCHES OF THE PROGRAMME

PRESERVING NATURAL HERITAGE
Mitigate and offset the habitats affected by the occupation of new infrastructures.



REPLENISHING AND CREATING NATURAL VALUE
Correct forest loss by carrying out projects and initiatives to plant trees on land belonging to Iberdrola and on third-party properties.

SOCIAL VALUE: RESEARCH AND AWARENESS
Fostering shared knowledge by encouraging research projects with Stakeholders and developing awareness raising initiatives.



IN LINE WITH THE MAJOR INTERNATIONAL STRATEGIES



*Estimation based on 0.3 t of CO₂ /sq ft in 30 years.

**Plantations 1100 ft/ha. Football field: 105 x 68 m.