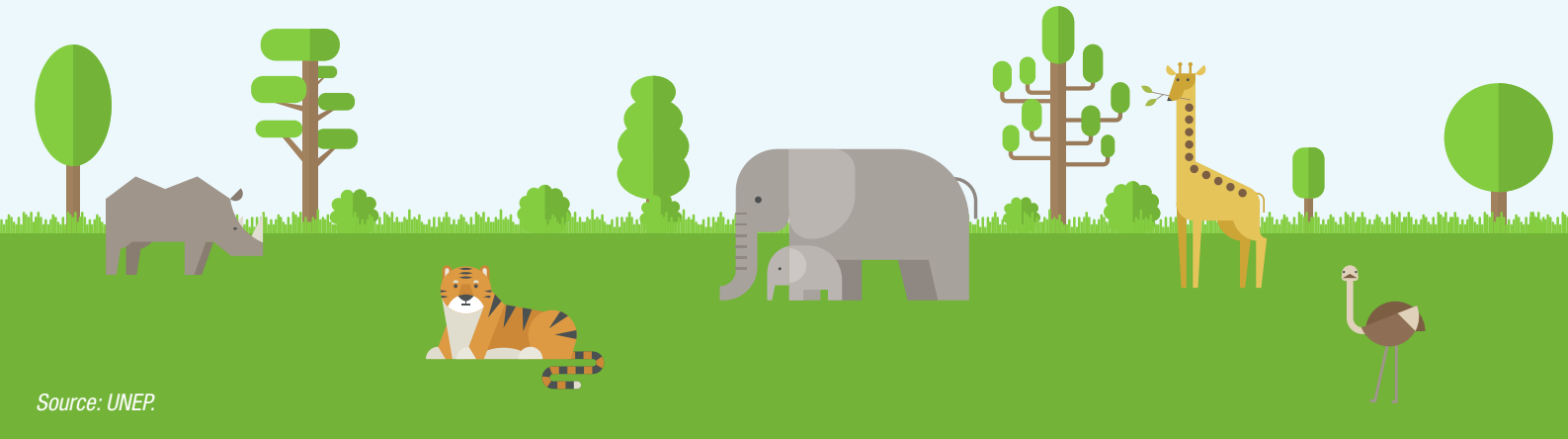


The loss of biodiversity over the last few centuries



Source: UNEP.

| Year | Population | Land area converted for human use | Loss of species in ecosystems |
|------------------------------|-------------|-----------------------------------|-------------------------------|
| 1800 | 0.9 billion | 7.6 % | -1.8 % |
| 1900 | 1.7 billion | 16.9 % | -4.9 % |
| 2000 | 6.1 billion | 39.3 % | -13.6 % |
| 2100 <i>Green model</i> | 8.7 billion | 33.4 % | -11.6 % |
| 2100 <i>Current model</i> | 12 billion | 49.1 % | -17 % |