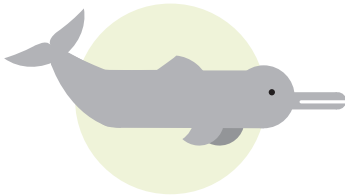


THE SIXTH GREAT EXTINCTION IN FIGURES

DECREASE OF POPULATIONS IN 2017

-81%

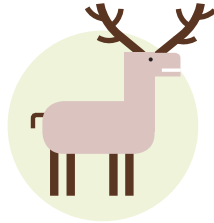
FRESHWATER SPECIES



River dolphin

-38%

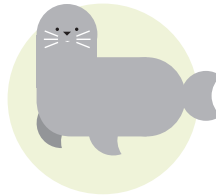
TERRESTRAL SPECIES



Reindeer or caribou

-36%

MARINE SPECIES



Mediterranean monk seal

THE MAJOR THREATS:

- Loss of habitats
- Overexploitation of species
- Pollution
- Invasive species and diseases
- Climate change



SOURCE: WWF

RED LIST OF THREATENED SPECIES

TOTAL SPECIES EVALUATED:

87,967



TOTAL SPECIES THREATENED:

25,062
(28.49%)



- VULNERABLE: 11,507
- ENDANGERED: 8,152
- CRITICALLY ENDANGERED: 5,403

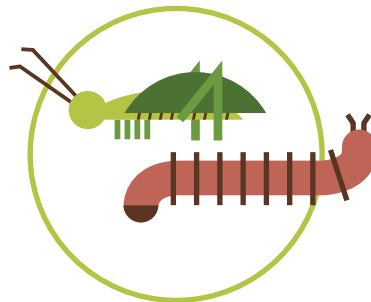
THE MOST THREATENED SPECIES OF 2017



THE NORTH AMERICAN ASH TREE

CAUSE:

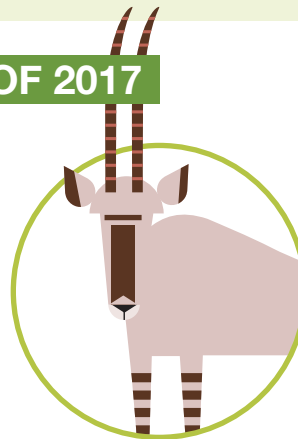
emerald ash borer, an invasive Asian beetle.



MADAGASCAR GRASSHOPPER AND MILLIPEDE

CAUSE:

degradation of their habitat due to the extraction of wood, grazing, and mining.



THE AFRICAN ANTELOPE

CAUSE:

disappearance of their habitat due to human occupation and climate change.



SNOW LEOPARD

CAUSE:

reduction in their habitat due to human pressures.