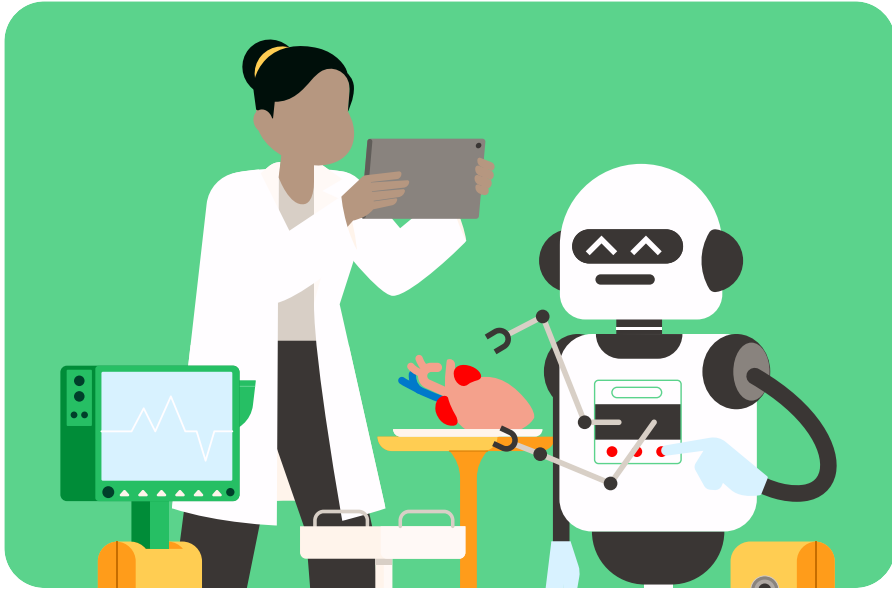


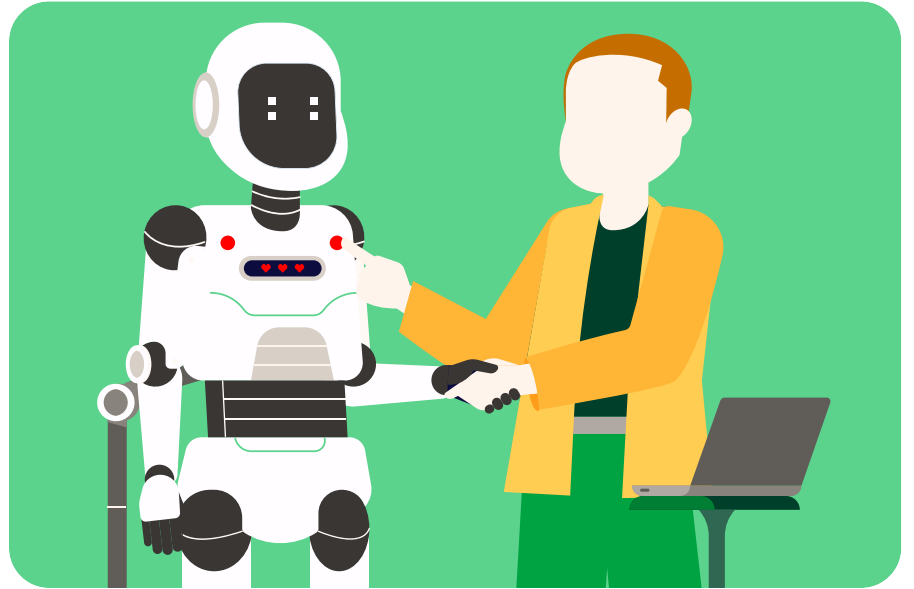
The key characteristics of Artificial General Intelligence (AGI)

If we move on to describe the **key characteristics of general AI**, the following can be considered:



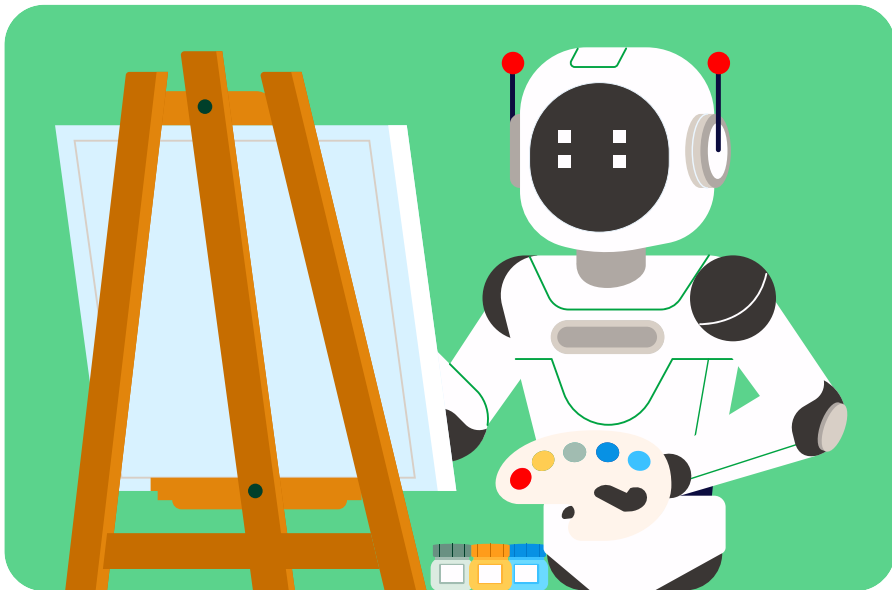
Human-like thinking

Can **reason, learn** and **solve** problems across different areas without specific programming.



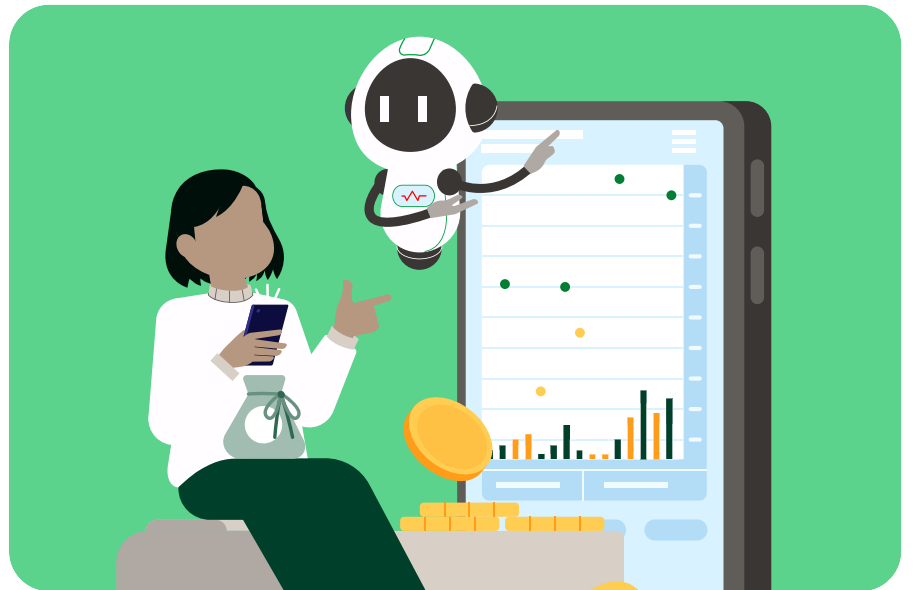
Adaptability

Handles **new tasks** and **environments** with ease.



Self-learning

Improves over time by **learning** from data and experience **without** human help.



Context awareness

Understands **complex situations** and makes **informed decisions**.