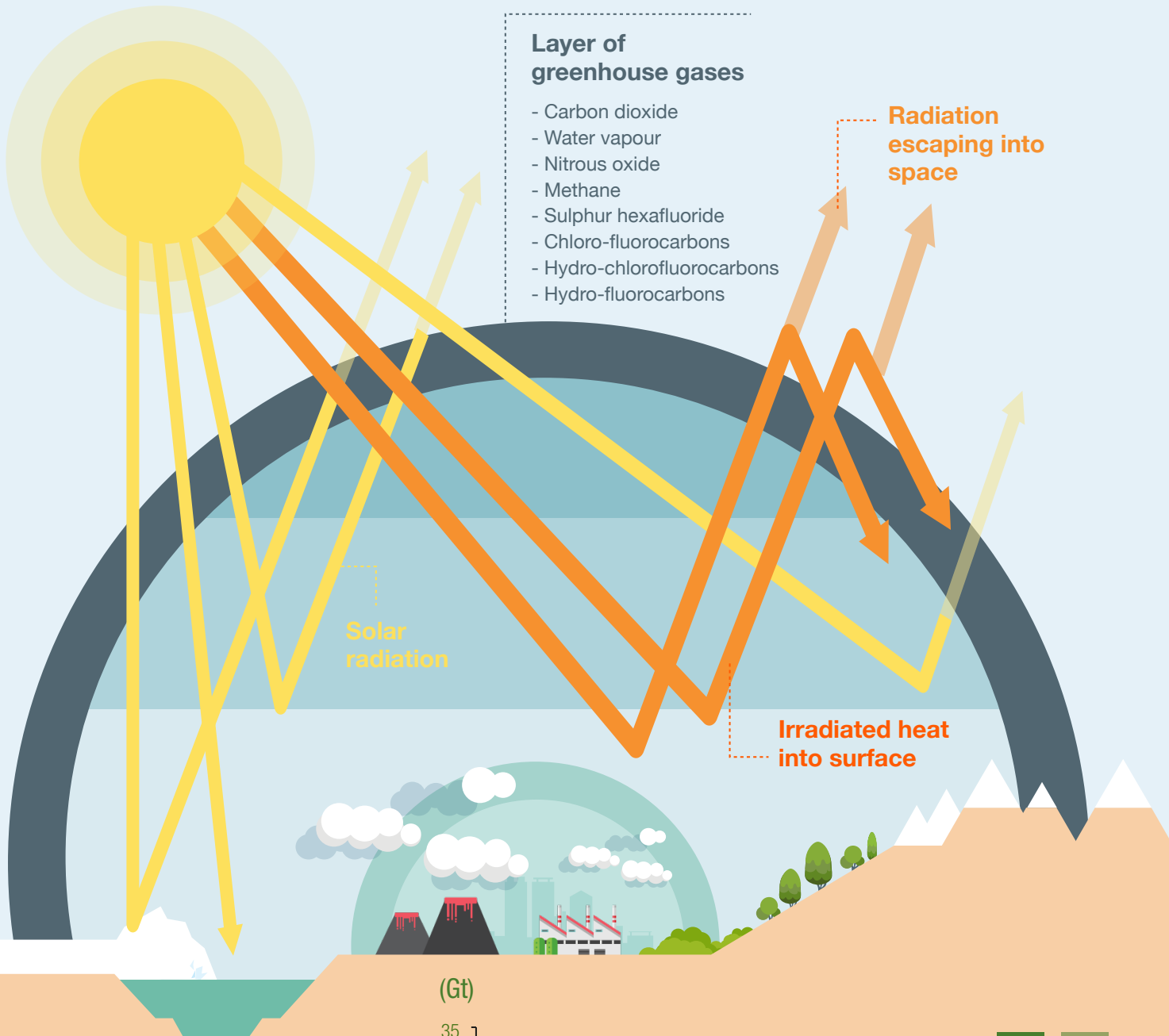


Greenhouse effect

Do you know how it is produced?

Numerous gases that are part of the atmosphere **absorb the Earth's infra-red radiation**, producing an **increase in the temperature** of the surface of our planet and the atmospheric layer that surrounds it.



Layer of greenhouse gases

- Carbon dioxide
- Water vapour
- Nitrous oxide
- Methane
- Sulphur hexafluoride
- Chloro-fluorocarbons
- Hydro-chlorofluorocarbons
- Hydro-fluorocarbons

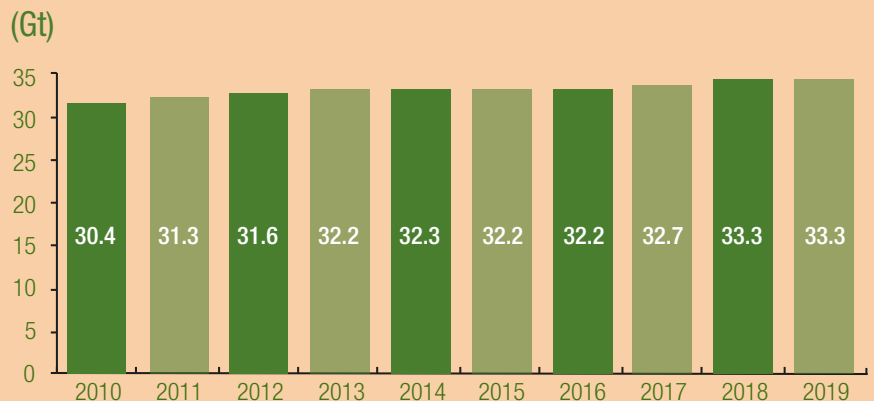
Radiation escaping into space

Solar radiation

Irradiated heat into surface

Evolution of CO₂

CO₂ is the gas that contributes the most to the greenhouse effect. We present the history of emissions in the world during the last decade.



Source: International Energy Agency (IEA)