

Delivering an increasing, inclusive, and sustainable social dividend



More than **4,100** new recruits in 2017

Training hours per employee:
x4 European average¹



Equal opportunities and diversity

sole continental European utility in 2018
'Bloomberg Gender-Equality Index'



~400.000 jobs²
generated worldwide

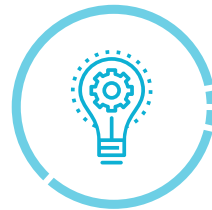


Purchases worth
Eur 8,700 M³
to 22,000 suppliers during 2017



Global tax contribution⁴

above EUR 7,100 M in 2017



Investment R+D+i in 2017: EUR 246 M



Firm commitment to emission reduction

2017 carbon intensity 38% below European average with a goal of reaching 150 gr CO₂ /kWh by 2030

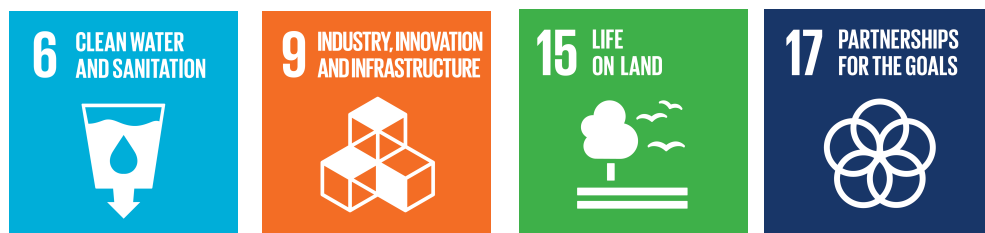


The SDGs, part of the company's business strategy

Main focus



Direct contribution



Indirect contribution to all other SDGs



¹ In Europe in 2016.

² According to PwC report, based on Iberdrola's activity in 2016, jobs include direct, indirect and induced.

³ Excluding fuel procurements.

⁴ Taxes include due and collected taxes.